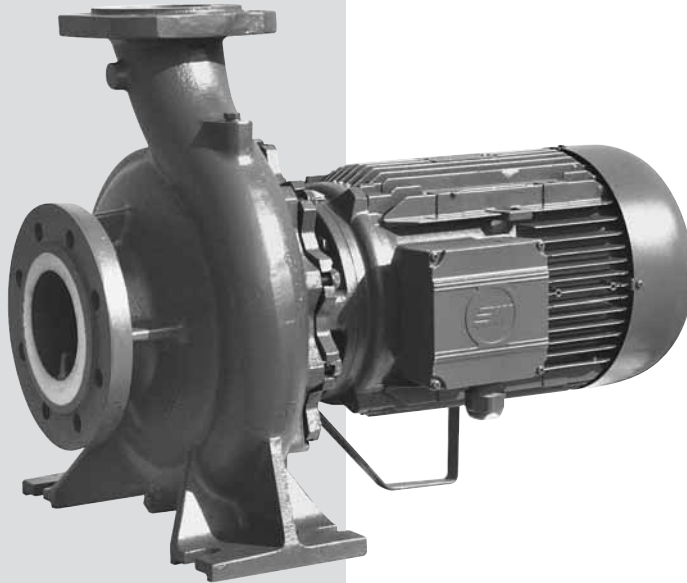


The NRM series is made up of single stage electric monobloc pumps with a flanged hydraulics/motor connection. The pump casing is manufactured in accordance with the provisions of EN733/DIN24255. The pumps may be installed in all positions, except where the suction port is directed upwards

- **STRONG AND RESISTANT**
- **WIDE RANGE**
- **HIGH HYDRAULIC PERFORMANCE**



### Applications

- Air conditioning and heating systems
- Pumping of water from lakes, watercourses, wells
- Overhead or surface irrigation
- Water supply systems.
- Boosting and firefighting systems.

### Motor

- Type: induction, enclosed, ventilated
- Level of protection : IP 55
- Insulation class F
- Design: B3/B5
- Speed of rotation:
  - NRM4 1450 rpm
  - NRM2 2900 rpm

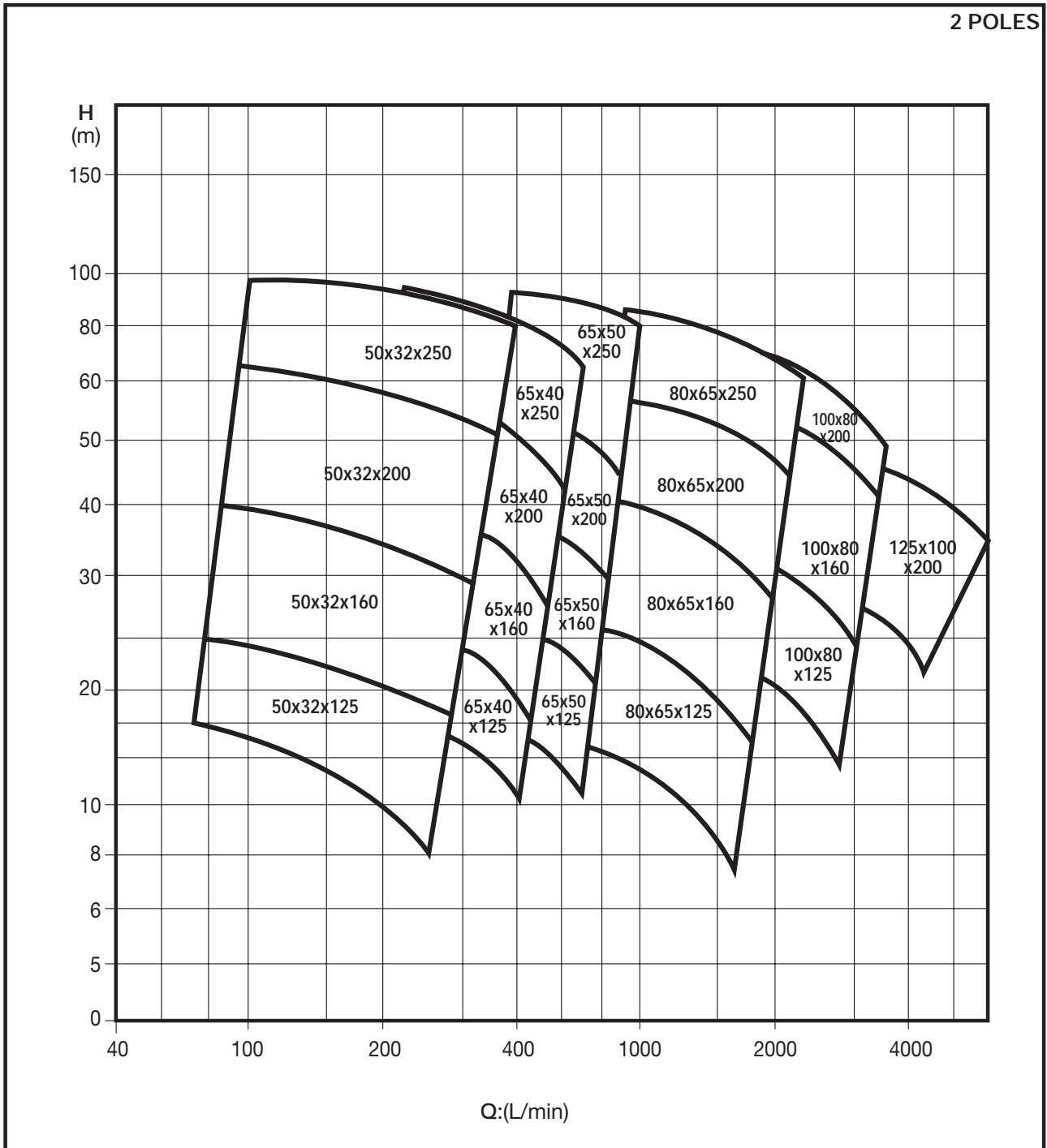
### Usage limitations

- Type of liquid: non-aggressive, non-explosive, free from solid particles and fibres.
- Hot water for heating
- Coolants
- Environmental temp.: max 40°C
- Temperature of pumped liquid: -10°C + 130°C
- Maximum operating pressure: 10 bar

### DESIGN FEATURES

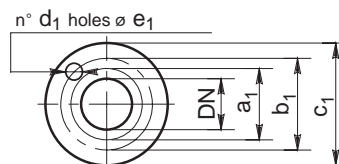
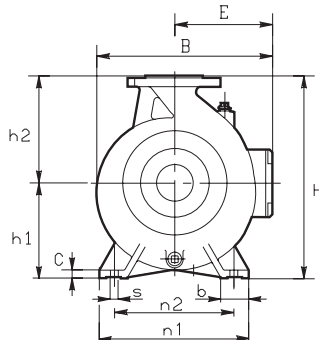
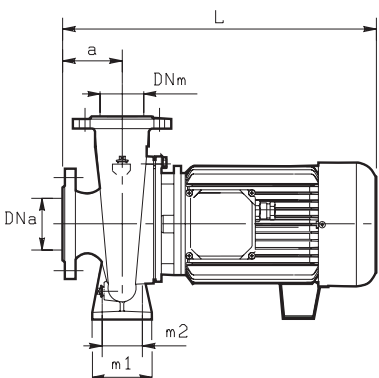
	Component	Material
1	Pump casing	EN GJL 200 ( ex G20 ) Cast iron
2	Motor bracket	EN GJL 200 ( ex G20 ) Cast iron
3	Impeller	EN GJL 200 ( ex G20 ) Cast iron
4	Shaft	AISI 420 stainless steel
5	Mechanical seal	Silicum carbide/Silicum carbide

# Performance range



## PUMP PERFORMANCE

CODE	MODEL	Nominal Power		VOLTAGE (V)	Amp. 3 X 400 V	Q	L/1' m <sup>3</sup> /h	Discharge head in meters																	
		HP	kW					100	125	150	175	200	225	250	275	300	350	400							
AT07003	NRM2 50X32X125C	1	0,75	220/380	3,3/1,9	Discharge head in meters	6	15,5	14,5	13,5	12,5	11,5	10,3	21,5	7,5	6									
AT07005	NRM2 50X32X125B	1,35	1	220/380	4,2/2,4		7,5	20,5	20	19	18	17	16	15	13,5	11,5	7,5								
AT07007	NRM2 50X32X125A	2	1,5	220/380	6,2/3,6		9	24,5	24	23,5	23	22	21	20	18,5	16,5	13								
AT07011	NRM2 50X32X160C	2,7	2	220/380	7,7/4,4		10,5	28,5	28	27,5	26,5	25,5	24	23	21	20	15								
AT07013	NRM2 50X32X160B	4	3	220/380	11/6,4			33,5	33	32,5	32	31	30	29	27,5	26	22,5								
AT07015	NRM2 50X32X160A	4	3	220/380	11/6,4			38	37,5	37	36	35	34	33	31,5	30	26,5								
AT07019	NRM2 50X32X200C	5,5	4	220/380	15,2/8,8			47	46,5	46	45	44	43	42	41	39,5	37,5	35							
AT07020	NRM2 50X32X200C			380/415	8																				
AT07021	NRM2 50X32X200B	7,5	5,5	220/380	19,5/11,3			55	54,5	54	53,5	53	52	51	49,5	48	45	42							
AT07022	NRM2 50X32X200B			380/415	11,3																				
AT07023	NRM2 50X32X200A	8,5	6,3	220/380	23,3/13,5			62	61,5	61	60	59	58	57	56	54	52,5	49							
AT07024	NRM2 50X32X200A			380/415	13,5																				
AT07027	NRM2 50X32X250C	10	7,5	220/380	30/17,3			67	66,5	66	65	64	63	61,5	60	58	54								
AT07028	NRM2 50X32X250C			380/415	17,3																				
AT07029	NRM2 50X32X250B	13,5	10	220/380	39/22,5			82	81,5	81	80,5	80	79	78	76,5	75	71	66							
AT07030	NRM2 50X32X250B			380/415	22,5																				
AT07032	NRM2 50X32X250A	17	12,5	380/415	27			93	92,5	92	91,5	91	90,5	90	89	88	85	80							



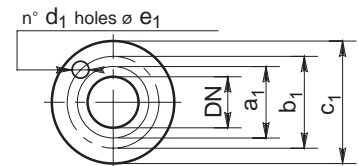
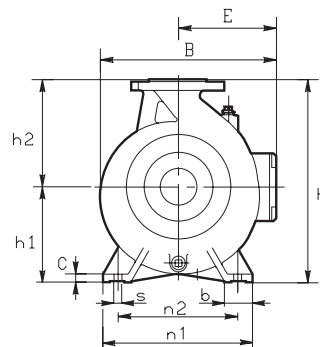
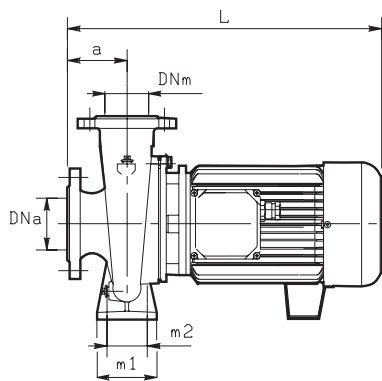
Flange UNI PN 16					
DN	a <sub>1</sub>	b <sub>1</sub>	c <sub>1</sub>	d <sub>1</sub>	e <sub>1</sub>
32	78	100	140	4	18
50	102	125	165	4	18

## TABLE OF SIZES AND WEIGHTS

Model	Motor	DNm	DNa	Dimension mm.																	Weight
				PN16	PN16	fig.	a	h1	h2	b	m1	m2	n1	n2	s	C	W	L	Z	B	
NRM2 50X32X125C	71	32	50	1	80	112	140	50	100	70	190	140	14	12		400		220	252	118	21
NRM2 50X32X125B	80	32	50	1	80	112	140	50	100	70	190	140	14	12		425		220	252	118	22
NRM2 50X32X125A	80	32	50	1	80	112	140	50	100	70	190	140	14	12		425		220	252	118	23,5
NRM2 50X32X160C	80	32	50	1	80	132	160	50	100	70	240	190	14	12		425		270	292	149	28
NRM2 50X32X160B	90	32	50	1	80	132	160	50	100	70	240	190	14	12		465		270	292	149	33
NRM2 50X32X160A	90	32	50	1	80	132	160	50	100	70	240	190	14	12		465		270	292	149	35
NRM2 50X32X200C	100	32	50	1	80	160	180	50	100	70	240	190	14	12		505		280	340	159	53,5
NRM2 50X32X200B	112	32	50	1	80	160	180	50	100	70	240	190	14	12		515		280	340	159	53
NRM2 50X32X200A	112	32	50	1	80	160	180	50	100	70	240	190	14	12		515		280	340	159	53
NRM2 50X32X250C	112	32	50	1	100	180	225	65	125	95	320	250	14	12		535		345	405	184	66
NRM2 50X32X250B	132	32	50	1	100	180	225	65	125	95	320	250	14	12		640		345	405	184	80
NRM2 50X32X250A	132	32	50	1	100	180	225	65	125	95	320	250	14	12		640		345	405	184	87

## PUMP PERFORMANCE

CODE	MODEL	Nominal Power		VOLTAGE (V)	Amp. 3 X 400 V	Q	L/1'	Discharge head in meters															
		HP	kW					250	275	300	350	400	450	500	550	600	650	700					
AT07035	NRM2 65X40X125C	2	1,5	220/380	6,2/3,6			15,5	15,3	15	14,1	13	11,8	10,5	9	7							
AT07037	NRM2 65X40X125B	2,7	2	220/380	7,7/4,4			19	18,8	18,5	17,5	16,5	15,5	14,5	13	10,5							
AT07039	NRM2 65X40X125A	4	3	220/380	11/6,4			24,5	24,3	24	23,5	23	22	20,5	19	17							
AT07043	NRM2 65X40X160B	4	3	220/380	11/6,4			30	29,5	29	28	26,5	25	23	20,5	18							
AT07045	NRM2 65X40X160A	5,5	4	220/380	15,2/8,8			36,5	36	35,5	34,5	33,5	32,5	31	29	27							
AT07046	NRM2 65X40X160A			380/415	8,8																		
AT07049	NRM2 65X40X200C	7,5	5,5	220/380	19,5/11,3			46	45	44	43	41,5	39	37	34	31							
AT07050	NRM2 65X40X200C			380/415	11,3																		
AT07051	NRM2 65X40X200B	8,5	6,3	220/380	23,3/13,5			51	50,5	50	49	47,5	45	42,5	40	37							
AT07052	NRM2 65X40X200B			380/415	13,5																		
AT07053	NRM2 65X40X200A	10	7,5	220/380	30/17,3			56,5	56	55,5	54,5	53	51	49	47	44							
AT07054	NRM2 65X40X200A			380/415	17,3																		
AT07057	NRM2 65X40X250D	13,5	10	220/380	39/22,5			69	68,5	68	66,5	65	63	61	59	57	54						
AT07058	NRM2 65X40X250D			380/415	22,5																		
AT07060	NRM2 65X40X250C	17	12,5	380/415	27			77	76,5	76	74,5	73	71	69	67	65	62,5	60					
AT07062	NRM2 65X40X250B	20	15	380/415	32			90	89,5	89	88	87	85	83	80,5	78	75	71					



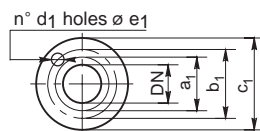
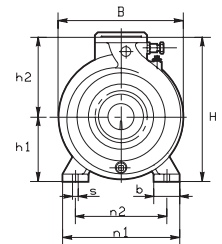
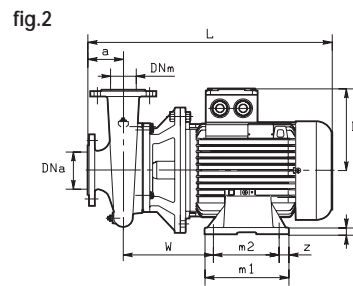
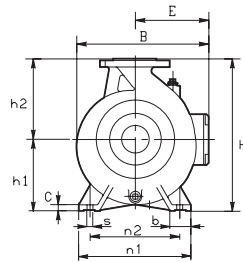
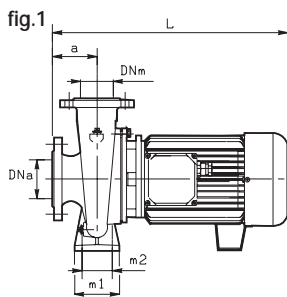
Flange UNI PN 16					
DN	a <sub>1</sub>	b <sub>1</sub>	c <sub>1</sub>	d <sub>1</sub>	e <sub>1</sub>
40	88	110	150	4	18
65	122	145	185	4	18

## TABLE OF SIZES AND WEIGHTS

Model	Motor	DNm	DNa	Dimensions mm.																Weight	
				PN16	PN16	fig.	a	h1	h2	b	m1	m2	n1	n2	s	C	W	L	Z		B
NRM2 65X40X125C	80	40	65	1	80	112	140	50	100	70	240	190	14	12		425	425	252	149	24,5	
NRM2 65X40X125B	80	40	65	1	80	112	140	50	100	70	210	160	14	12		425	425	252	149	25,5	
NRM2 65X40X125A	90	40	65	1	80	112	140	50	100	70	210	160	14	12		465		255	252	149	30
NRM2 65X40X160B	90	40	65	1	80	132	160	50	100	70	240	190	14	12		465		280	292	159	30
NRM2 65X40X160A	100	40	65	1	80	132	160	50	100	70	240	190	14	12		505		280	292	159	40
NRM2 65X40X200C	112	40	65	1	100	160	180	50	100	70	265	212	14	12		535		300	340	159	54
NRM2 65X40X200B	112	40	65	1	100	160	180	50	100	70	265	212	14	12		535		300	340	159	54,5
NRM2 65X40X200A	132	40	65	1	100	160	180	50	100	70	265	212	14	12		535		300	340	159	54,5
NRM2 65X40X250D	132	40	65	1	100	180	225	65	125	95	320	250	14	12		640		280	405	184	77
NRM2 65X40X250C	132	40	65	1	100	180	225	65	125	95	320	250	14	12		640		280	405	184	85
NRM2 65X40X250B	132	40	65	1	100	180	225	65	125	95	320	250	14	12		640		345	405	184	92

## PUMP PERFORMANCE

CODE	MODEL	Nominal Power		VOLTAGE (V)	Amp. 3 X 400 V	Q	Discharge head in meters													
		HP	kW				L/1' m³/h	400	450	500	550	600	650	700	750	800	900	1000		
AT07065	NRM2 65X50X125C	2,7	2	220/380	7,7/4,4	Discharge head in meters	17	16,5	16	15,5	15	14	13	12	11	9				
AT07067	NRM2 65X50X125B	4	3	220/380	11/6,4		21	20,5	20	19,5	19	18,3	17,5	16,8	16	14	12			
AT07069	NRM2 65X50X125A	5,5	4	220/380	15,2/8,8		25,5	25,3	25	24,5	24	23,5	23	22,5	21,5	20	18			
AT07070	NRM2 65X50X125A			380/415	8,8															
AT07073	NRM2 65X50X160B	7,5	5,5	220/380	19,5/11,3		32,5	32	31,5	31	30,5	30	29,5	29	28	26	23,5			
AT07074	NRM2 65X50X160B			380/415	11,3															
AT07075	NRM2 65X50X160A	10	7,5	220/380	30/17,3		37	36,5	36	35,5	35	34,5	34	33,5	32,5	31	29			
AT07076	NRM2 65X50X160A			380/415	17,3															
AT07079	NRM2 65X50X200B	13,5	10	220/380	39/22,5		51	50,5	50	49	48	47	45,5	44	42	39,5	37			
AT07080	NRM2 65X50X200B			380/415	22,5															
AT07082	NRM2 65X50X200A	17	12,5	380/415	27		58	57,5	57	56	55	54	53	51,5	50	46,5	42,5			
AT07086	NRM2 65X50X250D	20	15	380/415	32		72	71	70	69	68	67	66	64,5	63	60	56			
AT07088	NRM2 65X50X250C	25	18,5	380/415	38		80,5	80	79,5	78,5	77,5	76,5	75,5	74,5	73,5	71	67,5			
AT07090	NRM2 65X50X250B	30	22	380/415	45		92	91,8	91,5	91	90	89	88	87	86	83	80			



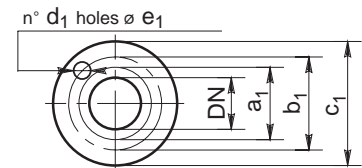
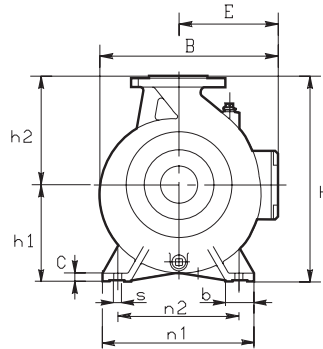
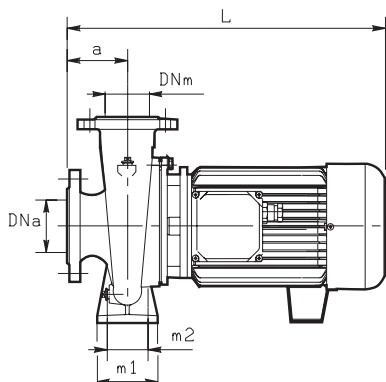
Flange UNI PN 16					
DN	a <sub>1</sub>	b <sub>1</sub>	c <sub>1</sub>	d <sub>1</sub>	e <sub>1</sub>
50	102	125	165	4	18
65	122	145	185	4	18

## TABLE OF SIZES AND WEIGHTS

Model	Motor	DNm	DNa	Dimensions mm.																Weight	
				PN16	PN16	fig.	a	h1	h2	b	m1	m2	n1	n2	s	C	W	L	Z		B
NRM2 65X50X125C	80	50	65	1	100	132	160	50	100	70	240	190	14	12		445	245	292	118	29,5	
NRM2 65X50X125B	90	50	65	1	100	132	160	50	100	70	240	190	14	12		485	270	292	149	36,5	
NRM2 65X50X125A	100	50	65	1	100	132	160	50	100	70	240	190	14	12		525	280	292	159	41	
NRM2 65X50X160B	112	50	65	1	100	160	180	50	100	70	265	212	14	12		535	300	340	159	51,5	
NRM2 65X50X160A	112	50	65	1	100	160	180	50	100	70	265	212	14	12		535	300	340	159	52	
NRM2 65X50X200A	132	50	65	1	100	160	200	50	100	70	265	212	14	12		640	320	360	184	68	
NRM2 65X50X200B	132	50	65	1	100	160	200	50	100	70	265	212	14	12		640	320	360	184	75	
NRM2 65X50X250D	132	50	65	1	100	180	225	65	125	95	320	250	14	14		640	345	405	184	93	
NRM2 65X50X250C	160	50	65	2	100	180	225	55	298	241	320	280	14	22	280	800	20	390	405	230	128
NRM2 65X50X250B	180	50	65	2	100	180	225	55	298	241	320	280	14	22	280	800	20	390	405	230	146

## PUMP PERFORMANCE

CODE	MODEL	Nominal Power		VOLTAGE (V)	Amp. 3 X 400 V	Q	L/1' m <sup>3</sup> /h	Discharge head in meters														
		HP	kW					600	650	700	750	800	900	1000	1250	1500	1750	2000	2250			
AT07093	NRM2 80x65X125C	5,5	4	220/380	15,2/8,8	Discharge head in meters	Q	17,5	17,3	17	16,5	16	15,5	14,5	12	9						
AT07094	NRM2 80x65X125C			380/415	8,8																	
AT07095	NRM2 80x65X125B	7,5	5,5	220/380	19,5/11,3			21	20,8	20,6	20,3	20	19,5	19	17	14,5	11					
AT07096	NRM2 80x65X125B			380/415	11,3																	
AT07097	NRM2 80x65X125A	8,5	6,3	220/380	23,3/13,5			25	24,8	24,6	24,3	24	23,5	23	21,5	19	19					
AT07098	NRM2 80x65X125A			380/415	13,5																	
AT07103	NRM2 80x65X160C	13,5	10	220/380	39/22,5					30,5	30,3	30	29,5	29	26,5	24	20,5	16				
AT07104	NRM2 80x65X160C			380/415	22,5																	
AT07106	NRM2 80x65X160B	17	12,5	380/415	27					36,5	36,3	36	35,5	34,5	33	30	27	23	19			
AT07108	NRM2 80x65X160A	20	15	380/415	32					41	40,8	40,5	40	39,5	38	35,5	33	29	24			
AT07112	NRM2 80x65X200D	20	15	380/415	32							44	43,5	41,5	39	35,5	31,5					
AT07114	NRM2 80x65X200C	25	18,5	380/415	38							51	50	49,5	48,5	46,5	43,5	39,5	35			
AT07116	NRM2 80x65X200B	30	22	380/415	45							57	56,5	56	55	53,5	51	48	42,5			
AT07120	NRM2 80x65X250D	30	22	380/415	45							64	63,5	63	61	57	53					
AT07122	NRM2 80x65X250C	40	30	380/415	58									77	76	74	70	66	60	53		
AT07124	NRM2 80x65X250B	50	37	380/415	71									86	85	83	79	75	70	64		



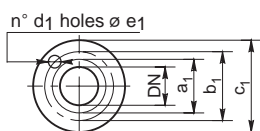
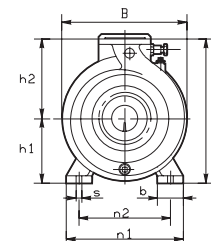
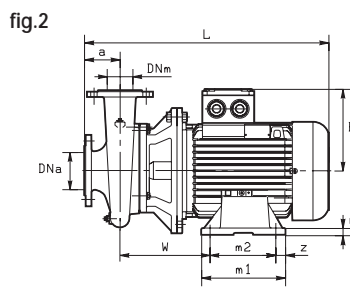
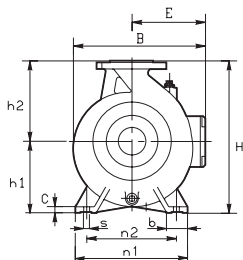
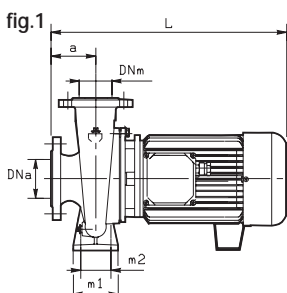
Flange UNI PN 16					
DN	a <sub>1</sub>	b <sub>1</sub>	c <sub>1</sub>	d <sub>1</sub>	e <sub>1</sub>
<b>65</b>	122	145	185	4	18
<b>80</b>	138	160	200	8	18

## TABLE OF SIZES AND WEIGHTS

Model	Motor	DNm		DNa	Dimensions mm.																	Weight
		PN16	PN16		fig.	a	h1	h2	b	m1	m2	n1	n2	s	C	W	L	Z	B	H	E	
NRM2 80X65X125C	100	65	80	1	100	160	180	65	125	95	280	212	14	12		525		300	340	159	44	
NRM2 80X65X125B	112	65	80	1	100	160	180	65	125	95	280	212	14	12		535		300	340	159	51	
NRM2 80X65X125A	112	65	80	1	100	160	180	65	125	95	280	212	14	12		535		300	340	159	51,5	
NRM2 80X65X160C	132	65	80	1	100	160	200	65	125	95	280	212	14	12		640		325	360	184	70	
NRM2 80X65X160B	132	65	80	1	100	160	200	65	125	95	280	212	14	12		640		325	360	184	77	
NRM2 80X65X160A	132	65	80	1	100	160	200	65	125	95	280	212	14	12		640		325	360	184	83	
NRM2 80X65X200D	132	65	80	1	100	180	225	55	125	95	320	250	14	12		640		345	405	184	87,5	
NRM2 80X65X200C	160	65	80	2	100	180	225	55	298	241	320	280	14	22	280	800	20	400	405	230	122	
NRM2 80X65X200B	160	65	80	2	100	180	225	55	298	241	320	280	14	22	280	800	20	400	405	230	140	
NRM2 80X65X250D	180	65	80	2	100	180	250	55	298	241	320	280	14	22	293	810	20	365	430	230	144	
NRM2 80X65X250C	200	65	80	2	100	200	250	60	345	305	360	318	18	24	325	905	20	400	450	257	172	
NRM2 80X65X250B	200	65	80	2	100	200	250	60	345	305	360	318	18	24	325	905	20	400	450	257	190	

## PUMP PERFORMANCE

CODE	MODEL	Nominal Power		VOLTAGE (V)	Amp. 3 X 400 V	Q	Discharge head in meters															
		HP	kW				1000	1250	1500	1750	2000	2250	2500	2750	3000	3500	4000	4500	5000			
							L/1'	60	75	90	105	120	135	150	165	180	210	240	270	300		
AT07127	NRM2 100X80X160D	13,5	10	220/380	39/22,5	Discharge head in meters	24	23	22	21	19,5	18	16,5	15								
AT07128	NRM2 100X80X160D			380/415	22,5		28,5	28	27	26	24,5	23	21,5	20	18,5							
AT07130	NRM2 100X80X160C	17	12,5	380/415	27		34	33,3	32,5	31,8	31	29	27,5	26	24,5							
AT07132	NRM2 100X80X160B	20	15	380/415	32		42	41	40	38,5	37	35	33	30,5	28							
AT07136	NRM2 100X80X200D	25	18,5	380/415	38		47	46,5	45,5	44,5	43	41	39	37	34							
AT07138	NRM2 100X80X200C	30	22	380/415	45		55	54	53	52	51	49	47	45	43	37						
AT07140	NRM2 100X80X200B	40	30	380/415	58		57	56,8	56,5	56	55	54	52,5	51	48	42						
AT07142	NRM2 100X80X200A	50	37	380/415	71			68	67	66	65	63	61	58	55	47						
AT07146	NRM2 100X80X250D	50	37	380/415	71																	



Flange UNI PN 16					
DN	a <sub>1</sub>	b <sub>1</sub>	c <sub>1</sub>	d <sub>1</sub>	e <sub>1</sub>
80	138	160	200	8	18
100	158	180	220	8	18

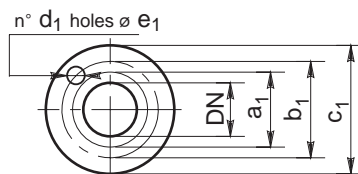
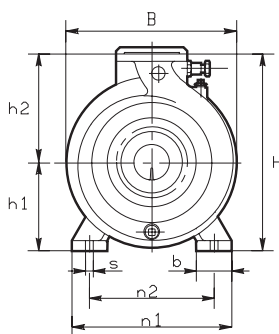
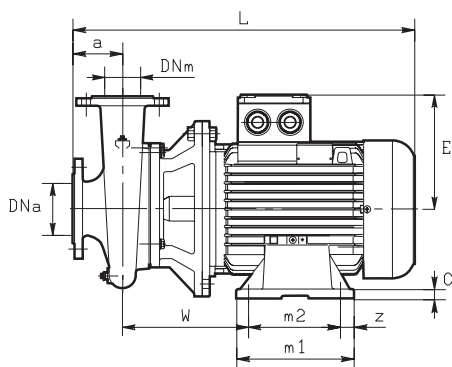
## TABLE OF SIZES AND WEIGHTS

Model	Motor	DNm	DNa	Dimensions mm.															Weight		
				PN16	PN16	fig.	a	h1	h2	b	m1	m2	n1	n2	s	C	W	L		Z	B
NRM2 100X80X160D	132	80	100	1	125	180	225	65	125	95	320	250	14	14		665		345	405	184	74
NRM2 100X80X160C	132	80	100	1	125	180	225	65	125	95	320	250	14	14		665		345	405	184	81,5
NRM2 100X80X160B	132	80	100	1	125	180	225	65	125	95	320	250	14	14		665		345	405	184	88,5
NRM2 100X80X200D	160	80	100	2	125	180	250	55	398	241	320	280	14	22	293	835	20	400	450	230	132
NRM2 100X80X200C	180	80	100	2	125	180	250	55	398	241	320	280	14	22	293	835	20	400	450	230	150
NRM2 100X80X200B	200	80	100	2	125	200	250	60	345	305	360	318	18	24	325	930	20	400	450	257	192
NRM2 100X80X200A	200	80	100	2	125	200	250	60	345	305	360	318	18	24	325	930	20	400	450	257	210
NRM2 100X80X250D	200	80	100	2	125	200	280	60	345	305	360	318	18	24	325	930	20	400	480	257	196



## PUMP PERFORMANCE

CODE	MODEL	Nominal Power		VOLTAGE (V)	Amp. 3 X 400 V	L/1' m <sup>3</sup> /h	1000	1250	1500	1750	2000	2250	2500	2750	3000	3500	4000	4500	5000	
		HP	kW				60	75	90	105	120	135	150	165	180	210	240	270	300	
AT07154	NRM2 125X100X200D	30	22	380/415	45	Discharge head in meters			39	38	37	36	34,5	33	31,5	28	24			
AT07156	NRM2 125X100X200C	40	30	380/415	58				47	46,5	46	45	44	42	40	38	33,5	28,4		
AT07158	NRM2 125X100X200B	50	37	380/415	71				54	53,5	53	52	51	50	49	46	43	38	34	

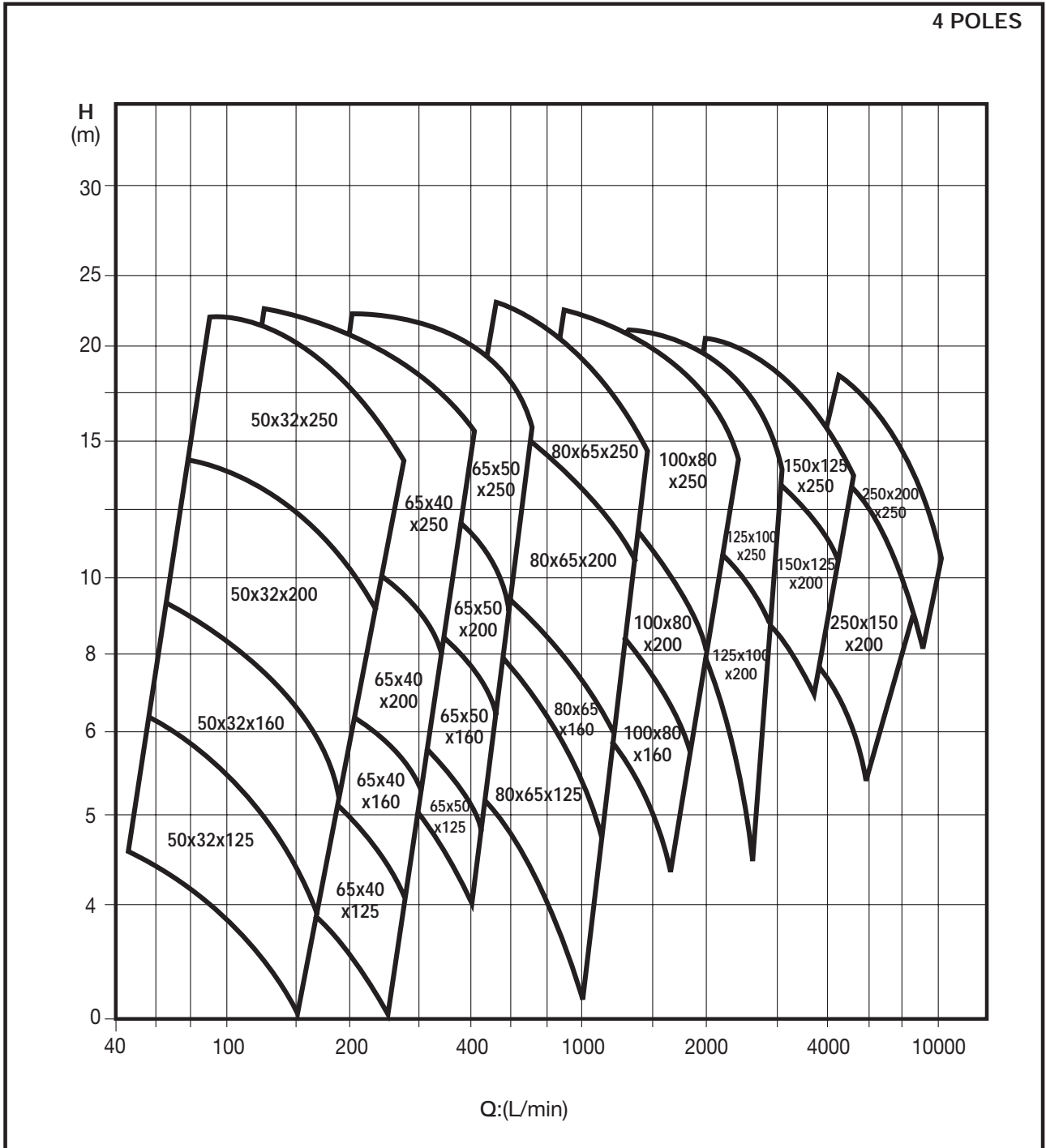


Flange UNI PN 16					
DN	a <sub>1</sub>	b <sub>1</sub>	c <sub>1</sub>	d <sub>1</sub>	e <sub>1</sub>
100	158	180	220	8	18
125	188	210	250	8	18

## TABLE OF SIZES AND WEIGHTS

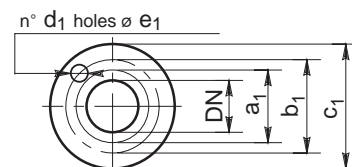
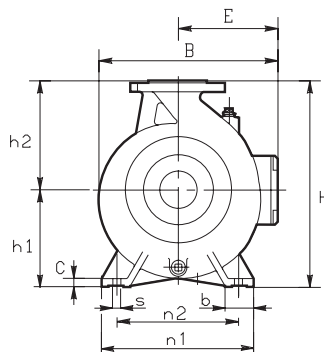
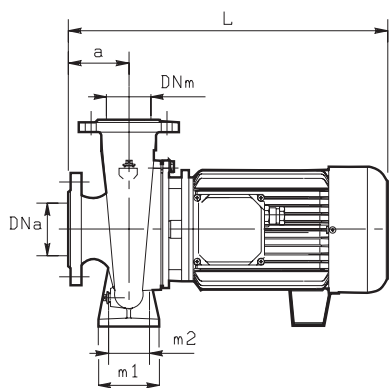
Model	Motor	DNm	DNa	Dimensions mm.																	Weight
				PN16	PN16	fig.	a	h1	h2	b	m1	m2	n1	n2	s	C	W	L	Z	B	
NRM2 125X100X200D	180	100	125	2	125	180	280	55	298	241	320	318	14	22	293	835	20	400	460	230	160
NRM2 125X100X200C	200	100	125	2	125	200	280	60	345	305	360	318	18	24	325	930	20	400	480	257	202
NRM2 125X100X200B	200	100	125	2	125	200	280	60	345	305	360	318	18	24	325	930	20	400	480	257	220

# Performance range



## PUMP PERFORMANCE

CODE	MODEL	Nominal Power		VOLTAGE (V)	Amp. 3 X 400 V	Q	L/1' m <sup>3</sup> /h	50	75	100	125	150	175	200	225	250	275	300	
		HP	kW					3	4,5	6	7,5	9	10,5	12	13,5	15	16,5	18	
AT07165	NRM4 50X32X125Y	0,33	0,25	220/380	1,46/0,85	Discharge head in meters	4,4	4	3,5	3	2,2								
AT07167	NRM4 50X32X125X	0,33	0,25	220/380	1,46/0,85		6,2	6	5,8	5,2	4,5	3,9	3						
AT07173	NRM4 50X32X160X	0,5	0,37	220/380	2/1,15		9,4	9,2	8,9	8,3	7,7	6,9	5,8	4,7					
AT07177	NRM4 50X32X200Y	1	0,75	220/380	3,3/1,9		13	12,8	12,4	11,9	11,3	10,6	9,8	9	8	7	6		
AT07179	NRM4 50X32X200X	1,25	0,9	220/380	4,2/2,4			14,5	14,3	13,8	13,3	12,7	11,8	10,9	10	9	8		
AT07183	NRM4 50X32X250Y	1,5	1,1	220/380	4,5/3,6			18,5	18,5	17,5	17	16	14,5	13	11,5				
AT07185	NRM4 50X32X250X	2	1,5	220/380	6,2/3,6			22	21,5	21	20,5	19,5	18	16,5	15	13			



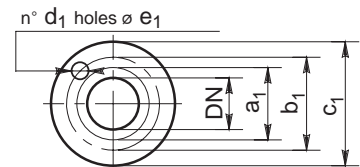
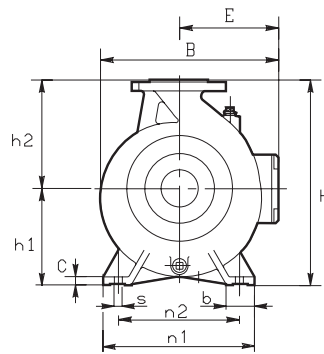
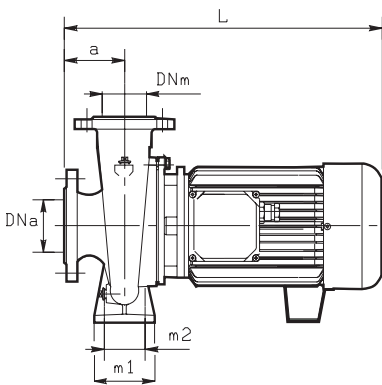
Flange UNI PN 16					
DN	a <sub>1</sub>	b <sub>1</sub>	c <sub>1</sub>	d <sub>1</sub>	e <sub>1</sub>
32	78	100	140	4	18
50	102	125	165	4	18

## TABLE OF SIZES AND WEIGHTS

Model	Motor	DNm	DNa	Dimensions mm.														Weight
				PN16	PN16	a	h1	h2	b	m1	m2	n1	n2	s	C	L	B	
NRM4 50X32X125Y	71	32	50	80	112	140	50	100	70	190	140	14	12	405	205	252	107	19,5
NRM4 50X32X125X	71	32	50	80	112	140	50	100	70	190	140	14	12	405	205	252	107	19,5
NRM4 50X32X160X	71	32	50	80	132	160	50	100	70	240	190	14	12	405	240	292	107	23
NRM4 50X32X200Y	80	32	50	80	160	180	50	100	70	240	190	14	12	425	255	340	118	31
NRM4 50X32X200X	80	32	50	80	160	180	50	100	70	240	190	14	12	425	255	340	118	30
NRM4 50X32X250Y	90	32	50	100	180	225	65	125	95	320	250	14	12	485	320	405	149	47
NRM4 50X32X250X	90	32	50	100	180	225	65	125	95	320	250	14	12	485	320	405	149	49

## PUMP PERFORMANCE

CODE	MODEL	Nominal Power		VOLTAGE (V)	Amp. 3 X 400 V	Q	Discharge head in meters												
		HP	kW				100	125	150	175	200	225	250	275	300	350	400		
AT07189	NRM4 65X40X125Y	0,33	0,25	220/380	1,46/0,85	Discharge head in meters	6	7,5	9	10,5	12	13,5	15	16,5	18	21	24		
AT07191	NRM4 65X40X125X	0,5	0,37	220/380	2/1,15		4,6	4,5	4,3	4,1	3,9	3,6	3,3	2,9	2,4				
AT07197	NRM4 65X40X160X	0,7	0,5	220/380	2,8/1,6		6,3	6,2	6,1	6	5,8	5,5	5,2	4,9	4,6	3			
AT07203	NRM4 65X40X200Y	1,5	1,1	220/380	4,5/3,6		8,8	8,6	8,3	8	7,7	7,3	6,9	6,4	5,9	4,5			
AT07205	NRM4 65X40X200X	1,5	1,1	220/380	4,5/3,6		12,7	12,5	12,1	11,7	11,2	10,7	10,1	9,5	8,5	7			
AT07209	NRM4 65X40X250Y	2	1,5	220/380	6,2/3,6		14,2	14	13,8	13,4	13	12,5	12	11	10	8,3	6		
AT07211	NRM4 65X40X250X	3	2,2	220/380	8,9/5,1		18,3	18	17,7	17,4	17	16,6	16,2	15,6	15	13,7	12		
							22,5	22,3	22	21,7	21,4	21	20,5	20	19,5	18,5	17		



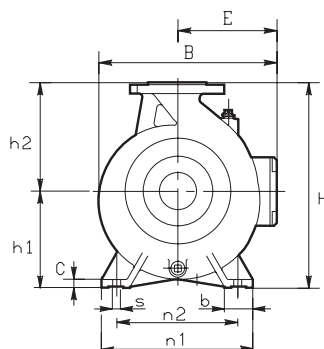
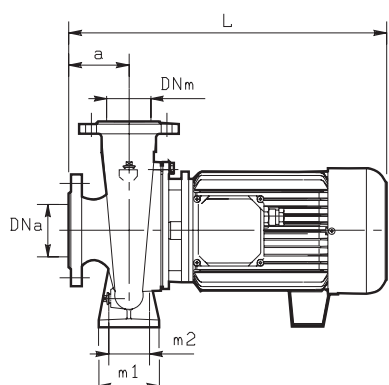
Flange UNI PN 16					
DN	a <sub>1</sub>	b <sub>1</sub>	c <sub>1</sub>	d <sub>1</sub>	e <sub>1</sub>
40	88	110	150	4	18
65	122	145	185	4	18

## TABLE OF SIZES AND WEIGHTS

Model	Motor	DNm	DNa	Dimensions mm.													Weight	
				PN16	PN16	a	h1	h2	b	m1	m2	n1	n2	s	C	L		B
NRM4 65X40X125Y	71	40	65	80	112	140	50	100	70	210	160	14	12	405	230	252	107	20,5
NRM4 65X40X125X	71	40	65	80	112	140	50	100	70	210	160	14	12	405	230	252	107	21,5
NRM4 65X40X160X	71	40	65	80	132	160	50	100	70	240	190	14	12	405	230	292	107	25
NRM4 65X40X200Y	90	40	65	100	160	180	50	100	70	265	212	14	12	485	242	340	149	36
NRM4 65X40X200X	90	40	65	100	160	180	50	100	70	265	212	14	12	485	242	340	149	36
NRM4 65X40X250Y	90	40	65	100	180	225	65	125	95	320	250	14	12	485	325	405	149	47,5
NRM4 65X40X250X	100	40	65	100	180	225	65	125	95	320	250	14	12	525	325	405	159	54

## PUMP PERFORMANCE

CODE	MODEL	Nominal Power		VOLTAGE (V)	Amp. 3 X 400 V	Q	Discharge head in meters																		
		HP	kW				L/1' m³/h	150	175	200	225	250	275	300	350	400	450	500	550	600	650	700			
AT07215	NRM4 65X50X125Y	0,5	0,37	220/380	2/1,15	Discharge head in meters	5,3	5,3	5,2	5,1	5	4,9	4,8	4,5	4,1	3,6	3								
AT07217	NRM4 65X50X125X	0,7	0,5	220/380	2,8/1,6		6,4	6,3	6,2	6,1	6	5,9	5,8	5,5	5,2	4,9	4,4								
AT07221	NRM4 65X50X160Y	1	0,75	220/380	3,3/1,9				8,2	8	7,9	7,8	7,7	7,4	7	6,6	6	5	4						
AT07223	NRM4 65X50X160X	1,25	0,9	220/380	4,2/2,4				9	8,9	8,8	8,7	8,6	8,4	8,1	7,7	7,2	6,5	5,5						
AT07227	NRM4 65X50X200Y	1,5	1,1	220/380	4,5/3,6				12,4	12,2	12	11,8	11,5	10,8	10	9	8	7	5,8						
AT07229	NRM4 65X50X200X	2	1,5	220/380	6,2/3,6				14,3	14,2	14,1	14	13,7	13	12,3	11,3	10,2	9,1	7,8	6,4	5				
AT07233	NRM4 65X50X250Y	3	2,2	220/380	8,9/5,1				18,5	18,3	18,1	17,8	17,5	17	16,5	15,5	14,5	13,5	12,5	11,5	10				
AT07235	NRM4 65X50X250X	4	3	220/380	11/6,4				22,5	22,4	22,3	22,2	22	21,5	20,9	20,2	19,4	18,5	17,5	16,3	15				



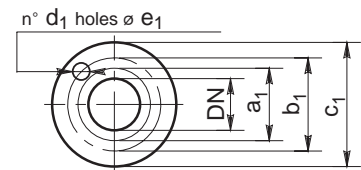
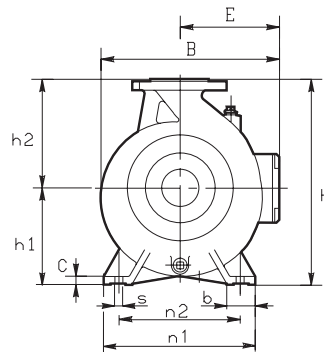
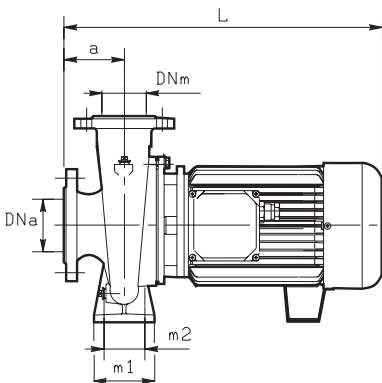
Flange UNI PN 16					
DN	a <sub>1</sub>	b <sub>1</sub>	c <sub>1</sub>	d <sub>1</sub>	e <sub>1</sub>
50	102	125	165	4	18
65	122	145	185	4	18

## TABLE OF SIZES AND WEIGHTS

Model	Motor	DNm	DNa	Dimensions mm.														Weight
				PN16	PN16	a	h1	h2	b	m1	m2	n1	n2	s	C	L	B	
NRM4 65X50X125Y	71	50	65	100	132	160	50	100	70	240	190	14	12	425	246	292	107	25
NRM4 65X50X125X	71	50	65	100	132	160	50	100	70	240	190	14	12	425	246	292	107	26
NRM4 65X50X160Y	80	50	65	100	160	180	50	100	70	265	212	14	12	445	269	340	118	32
NRM4 65X50X160X	80	50	65	100	160	180	50	100	70	265	212	14	12	445	269	340	118	33
NRM4 65X50X200Y	90	50	65	100	160	180	50	100	70	265	212	14	12	485	285	360	149	38
NRM4 65X50X200X	90	50	65	100	160	180	50	100	70	265	212	14	12	485	285	360	149	40
NRM4 65X50X250Y	100	50	65	100	180	225	65	125	95	320	250	14	14	525	333	405	159	57
NRM4 65X50X250X	100	50	65	100	180	225	65	125	95	320	250	14	14	525	333	405	159	63

## PUMP PERFORMANCE

CODE	MODEL	Nominal Power		VOLTAGE (V)	Amp. 3 X 400 V	Q	Discharge head in meters																			
		HP	kW				L/1'	300	350	400	450	500	550	600	700	800	900	1000	1100	1200	1300	1400				
							m <sup>3</sup> /h	18	21	24	27	30	33	36	42	48	54	60	66	72	78	84				
AT07241	NRM4 80X65X125X	1	0,75	220/380	3,3/1,9	Discharge head in meters	5,8	5,7	5,6	5,5	5,3	5,1	4,9	4,5	4											
AT07245	NRM4 80X65X160Y	1,5	1,1	220/380	4,5/3,6		8,6	8,5	8,4	8,3	8,2	8,1	8	7,5	6,8	6	5									
AT07247	NRM4 80X65X160X	2	1,5	220/380	6,2/3,6		10,2	10,1	10	9,9	9,8	9,6	9,4	9	8,5	7,7										
AT07251	NRM4 80X65X200Y	3	2,2	220/380	8,9/5,1				12,5	12,4	12,3	12,2	12,1	11,7	11,1	10,5	9,6	8,5								
AT07253	NRM4 80X65X200X	4	3	220/380	11/6,4						15,2	15,1	15	14,6	14,3	13,6	12,8	12	11							
AT07257	NRM4 80X65X250Y	5,5	4	220/380	15,2/8,8						19,5	19,3	19,1	18,5	17,5	16,5	15,5	14	12,5	10,5						
AT07258	NRM4 80X65X250Y			380/415	8,8																					
AT07259	NRM4 80X65X250X	7,5	5,5	220/380	30/17,3						23	22,8	22,6	22,2	21,4	20,6	19,7	18,7	17,5	16	14					
AT07260	NRM4 80X65X250X			380/415	17,3																					



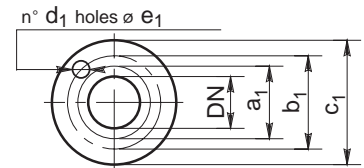
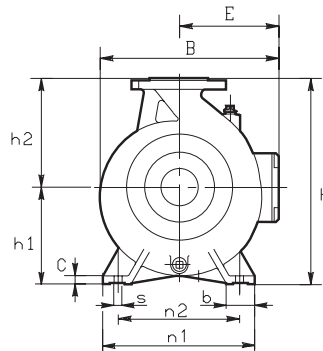
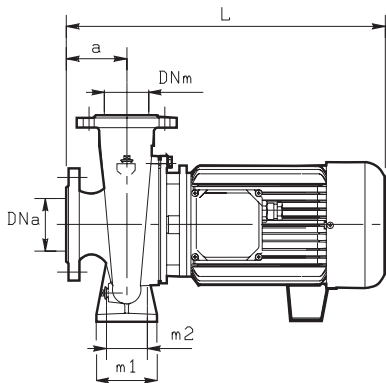
Flange UNI PN 16					
DN	a <sub>1</sub>	b <sub>1</sub>	c <sub>1</sub>	d <sub>1</sub>	e <sub>1</sub>
65	122	145	185	4	18
80	138	160	200	8	18

## TABLE OF SIZES AND WEIGHTS

Model	Motor	DNm	DNa	Dimensions mm.														Weight
				PN16	PN16	a	h1	h2	b	m1	m2	n1	n2	s	C	L	B	
NRM4 80X65X125X	80	65	80	100	160	180	65	125	95	280	212	14	12	445	286	340	118	32
NRM4 80X65X160Y	90	65	80	100	160	200	65	125	95	280	212	14	12	485	288	360	149	37,5
NRM4 80X65X160X	90	65	80	100	160	200	65	125	95	280	212	14	12	485	288	360	149	40
NRM4 80X65X200Y	100	65	80	100	180	225	65	125	95	320	250	14	14	525	328	405	159	51
NRM4 80X65X200X	100	65	80	100	180	225	65	125	95	320	250	14	14	525	328	405	159	57
NRM4 80X65X250Y	112	65	80	100	200	250	80	160	120	360	280	14	14	535	365	450	159	80
NRM4 80X65X250X	132	65	80	100	200	250	80	160	120	360	280	14	14	640	365	450	184	90

## PUMP PERFORMANCE

CODE	MODEL	Nominal Power		VOLTAGE (V)	Amp. 3 X 400 V	Q	Discharge head in meters																		
		HP	kW				L/1' m³/h	600	650	700	800	900	1000	1100	1200	1300	1400	1500	1750	2000	2250				
AT07263	NRM4 100X80X160Y	2	1,5	220/380	6,2/3,6	Discharge head in meters	7,7	7,6	7,5	7,3	7	6,7	6,4	6,1	5,8	5,4	5								
AT07265	NRM4 100X80X160X	3	2,2	220/380	8,9/5,1		9,7	9,6	9,5	9,3	9	8,8	8,5	8,2	7,9	7,5	7,1	6							
AT07269	NRM4 100X80X200Y	4	3	220/380	11/6,4		12	11,9	11,7	11,5	11,3	11	10,5	10	9,5	9	8,5	7							
AT07271	NRM4 100X80X200X	5,5	4	220/380	15,2/8,8		14,5	14,4	14,2	14	13,8	13,5	13,1	12,7	12,2	11,6	11	9	6,5						
AT07272	NRM4 100X80X200X			380/415	8,8																				
AT07275	NRM4 100X80X250Y	7,5	5,5	220/380	19,5/11,3						19	18,5	18	17,5	17	16,5	16	14	12						
AT07276	NRM4 100X80X250Y			380/415	11,3																				
AT07277	NRM4 100X80X250X	10	7,5	220/380	30/17,3						22	21,9	21,7	21,5	21,3	21	20	19	17	14,5					
AT07278	NRM4 100X80X250X			380/415	17,3																				



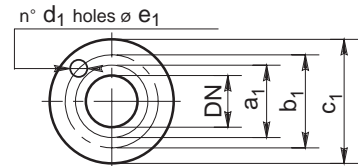
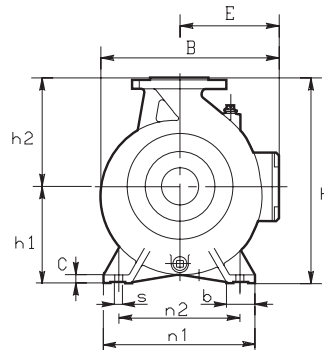
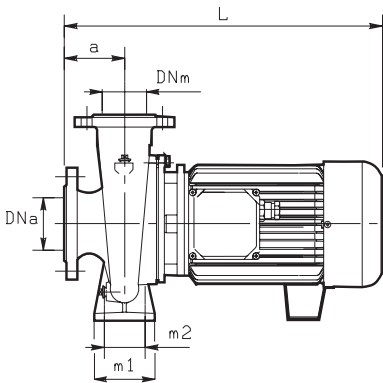
Flange UNI PN 16					
DN	a <sub>1</sub>	b <sub>1</sub>	c <sub>1</sub>	d <sub>1</sub>	e <sub>1</sub>
80	138	160	200	8	18
100	158	180	220	8	18

## TABLE OF SIZES AND WEIGHTS

Model	Motor	DNm	DNa	Dimensions mm.														Weight	
				PN16	PN16	a	h1	h2	b	m1	m2	n1	n2	s	C	L	B		H
NRM4 100X80X160Y	90	80	100		125	180	225	65	125	95	320	250	14	14	510	330	405	149	45
NRM4 100X80X160X	100	80	100		125	180	225	65	125	95	320	250	14	14	510	330	405	149	51
NRM4 100X80X200Y	100	80	100		125	180	250	65	125	95	345	280	14	12	560	355	430	159	73
NRM4 100X80X200X	112	80	100		125	180	250	65	125	95	345	280	14	12	550	355	430	159	66
NRM4 100X80X250Y	132	80	100		125	200	280	80	160	120	400	315	18	14	665	400	480	184	96
NRM4 100X80X250X	132	80	100		125	200	280	80	160	120	400	315	18	14	665	400	480	184	106

## PUMP PERFORMANCE

CODE	MODEL	Nominal Power		VOLTAGE (V)	Amp. 3 X 400 V	Q	Discharge head in meters														
		HP	kW				900	1000	1100	1200	1300	1400	1500	1750	2000	2250	2500	2750	3000		
AT07281	NRM4 125X100X200Y	5,5	4	220/380	15,2/8,8	Discharge head in meters	12,4	12,2	12	11,8	11,6	11,4	11,2	10,3	9,3	8,2	6,8	4,8			
AT07282	NRM4 125X100X200Y			380/415	8,8																
AT07283	NRM4 125X100X200X	7,5	5,5	220/380	19,5/11,3		14,5	14,4	14,2	14	13,8	13,6	13,4	12,8	12	11	10	8,5			
AT07284	NRM4 125X100X200X			380/415	11,3																
AT07287	NRM4 125X100X250Y	10	7,5	220/380	30/17,3			19,5	19,3	19,1	18,9	18,7	18,5	17,5	16,5	15,2	14	12			
AT07288	NRM4 125X100X250Y			380/415	17,3																
AT07290	NRM4 125X100X250X	12,5	9,2	380/415	19			22	21,9	21,8	21,7	21,6	21,5	20,5	19,5	18,5	17	15	13		



Flange UNI PN 16					
DN	a <sub>1</sub>	b <sub>1</sub>	c <sub>1</sub>	d <sub>1</sub>	e <sub>1</sub>
100	158	180	220	8	18
125	188	210	250	8	18

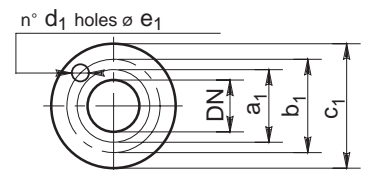
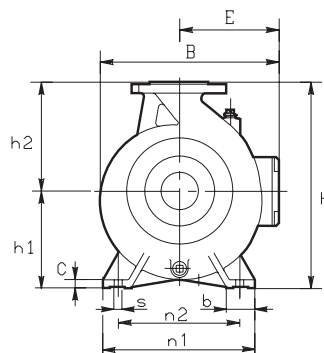
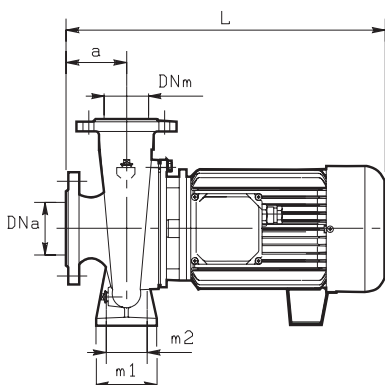
## TABLE OF SIZES AND WEIGHTS

Model	Motor	DNm	DNa	Dimensions mm.												Weight		
				PN16	PN16	a	h1	h2	b	m1	m2	n1	n2	s	C		L	B
NRM4 125X100X200Y	112	100	125	125	200	280	80	160	120	360	280	18	14	560	385	480	1559	78
NRM4 125X100X200X	132	100	125	125	200	280	80	160	120	360	280	18	14	665	385	480	184	90
NRM4 125X100X250Y	132	100	125	140	225	280	80	160	120	400	315	18	14	675	420	505	184	112
NRM4 125X100X250X	132	100	125	140	225	280	80	160	120	400	315	18	14	675	420	505	184	118



## PUMP PERFORMANCE

CODE	MODEL	Nominal Power		VOLTAGE (V)	Amp. 3 X 400 V	Q	L/1' m <sup>3</sup> /h	1800	2000	2500	3000	3500	4000	4500	5000	
		HP	kW					108	120	150	180	210	240	270	300	
AT07403	NRM4 150X125X200W	7,5	5,5	220/380	19,5/11,3	Discharge head in meters		10,4	10,2	9,4	8,3	6,8				
AT07404	NRM4 150X125X200W			380/415	11,3											
AT07405	NRM4 150X125X200Z	10	7,5	220/380	30/17,3			11,6	11,5	10,9	9,9	8,6	7			
AT07406	NRM4 150X125X200Z			380/415	17,3											
AT07407	NRM4 150X125X200Y	10	7,5	220/380	30/17,3			13	12,8	12,3	11,6	10,5	9,1	7,5		
AT07408	NRM4 150X125X200Y			380/415	17,3											
AT07410	NRM4 150X125X200X	12,5	9,2	380/415	19			14,3	14,2	13,8	13,2	12,3	11,1	9,6	8	
AT07416	NRM4 150X125X250Z	15	11	380/415	22,5			17	16,6	15,7	14,4	12,6				
AT07418	NRM4 150X125X250Y	20	15	380/415	27,8				19,8	19	18	16,6	15			
AT07420	NRM4 150X125X250X	20	15	380/415	27,8				20,8	19,7	18,6	17	15,2	13,2		



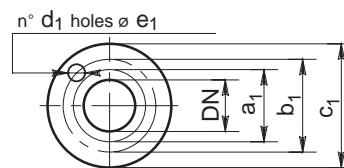
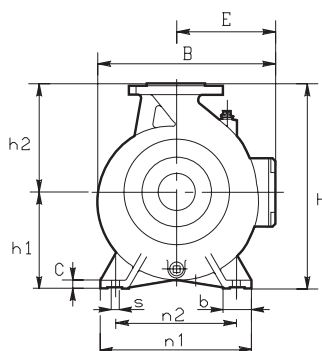
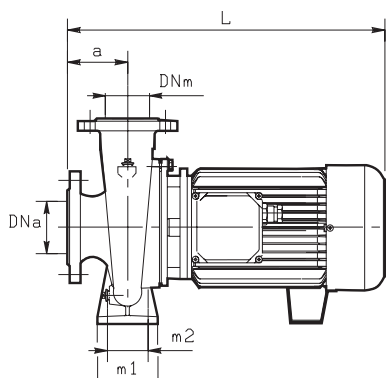
Flange UNI PN 16					
DN	a <sub>1</sub>	b <sub>1</sub>	c <sub>1</sub>	d <sub>1</sub>	e <sub>1</sub>
125	188	210	250	8	18
150	212	240	285	8	22

## TABLE OF SIZES AND WEIGHTS

Model	Motor	DNm	DNa	Dimensions mm.														Weight
				PN16	PN16	a	h1	h2	b	m1	m2	n1	n2	s	C	L	B	
NRM4 150X125X200W	132	125	150	140	250	315	80	160	120	400	315	18	14	700	470	565	255	124
NRM4 150X125X200Z	132	125	150	140	250	315	80	160	120	400	315	18	14	700	470	565	255	134
NRM4 150X125X200Y	132	125	150	140	250	315	80	160	120	400	315	18	14	700	470	565	255	134
NRM4 150X125X200X	132	125	150	140	250	315	80	160	120	400	315	18	14	700	470	565	255	140
NRM4 150X125X250Z	132	125	150	140	250	355	80	160	120	400	315	18	14	700	470	605	255	162
NRM4 150X125X250Y	160	125	150	140	250	355	80	160	120	400	315	18	14	855	470	605	255	190
NRM4 150X125X250X	160	125	150	140	250	355	80	160	120	400	315	18	14	855	470	605	255	190

## PUMP PERFORMANCE

CODE	MODEL	Nominal Power		VOLTAGE (V)	Amp. 3 X 400 V	L/1' Q m³/h	2500	3000	3500	4000	4500	5000	5500	6000	7000
		HP	kW				150	180	210	240	270	300	330	360	450
AT07423	NRM4 200X150X200W	10	7,5	220/380	30/17,3	Discharge head in meters	10,4	9,7	8,9	7,9	6,7	5,5			
AT07424	NRM4 200X150X200W			380/415	17,3										
AT07426	NRM4 200X150X200Z	12,5	9,2	380/415	19		11,5	10,9	10,2	9,3	8,3	7	5,8		
AT07428	NRM4 200X150X200Y	15	11	380/415	22,5			13,3	12,6	12	11,1	10,1	9	7,6	
AT07430	NRM4 200X150X200X	20	15	380/415	27,8			14,5	14	13,2	12,5	11,6	10,6	9,4	8



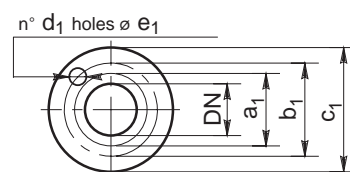
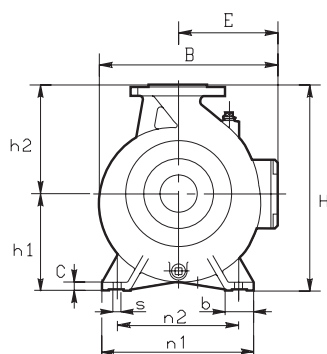
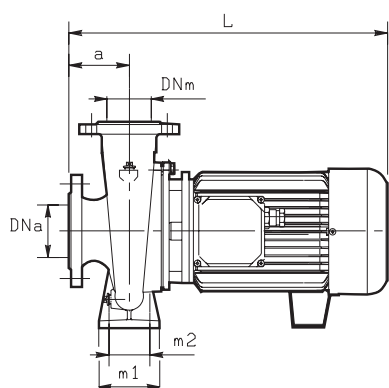
Flange UNI PN 16					
DN	a <sub>1</sub>	b <sub>1</sub>	c <sub>1</sub>	d <sub>1</sub>	e <sub>1</sub>
150	212	240	285	8	22
200	268	295	340	8	22

## TABLE OF SIZES AND WEIGHTS

Model	Motor	DNm	DNa	Dimensions mm.													Weight	
		PN16	PN16	a	h1	h2	b	m1	m2	n1	n2	s	C	L	B	H		E
NRM4 200X150X200W	132	150	200	160	280	400	100	200	155	550	450	24	22	855	550	680	295	167
NRM4 200X150X200Z	132	150	200	160	280	400	100	200	155	550	450	24	22	855	550	680	295	173
NRM4 200X150X200Y	132	150	200	160	280	400	100	200	155	550	450	24	22	855	550	680	295	175
NRM4 200X150X200X	160	150	200	160	280	400	100	200	155	550	450	24	22	875	550	680	295	203

## PUMP PERFORMANCE

CODE	MODEL	Nominal Power		VOLTAGE (V)	Amp. 3 X 400 V	Q	L/1' m <sup>3</sup> /h	4500	5000	5500	6000	6500	7000	8000	9000	10000	
		HP	kW					270	300	330	360	390	450	480	540	600	
AT07434	NRM4 250X200X250W	25	18,5	380/415	32	Discharge head in meters	13,5	13	12,4	11,8	11,2	10,5	9				
AT07436	NRM4 250X200X250Z	25	18,5	380/415	32		14,6	14	13,5	13	12,4	11,7	10,2				
AT07438	NRM4 250X200X250Y	30	22	380/415	39		17	16,5	16	15,4	14,7	14	12,4	10,5			
AT07440	NRM4 250X200X250X	30	22	380/415	39		18,6	18	17,6	17	16,4	15,8	14,3	12,5	10,6		



Flange UNI PN 16					
DN	a <sub>1</sub>	b <sub>1</sub>	c <sub>1</sub>	d <sub>1</sub>	e <sub>1</sub>
200	268	295	340	8	22
250	320	350	395	8	25

## TABLE OF SIZES AND WEIGHTS

Model	Motor	DNm	DNa	Dimensions mm.														Weight
				PN16	PN16	a	h1	h2	b	m1	m2	n1	n2	s	C	L	B	
NRM4 250X200X250W	180	200	250	200	315	450	100	200	155	550	450	24	22	1000	630	765	350	278
NRM4 250X200X250Z	180	200	250	200	315	450	100	200	155	550	450	24	22	1000	630	765	350	278
NRM4 250X200X250Y	180	200	250	200	315	450	100	200	155	550	450	24	22	1000	630	765	350	300
NRM4 250X200X250X	180	200	250	200	315	450	100	200	155	550	450	24	22	1000	630	765	350	300