

Variable speed pumps of the wet runner type are suitable for the circulation of water in both individual and communal heating systems.

- 3 SPEED
- MANUAL EXTERNAL RELEASE



Applications

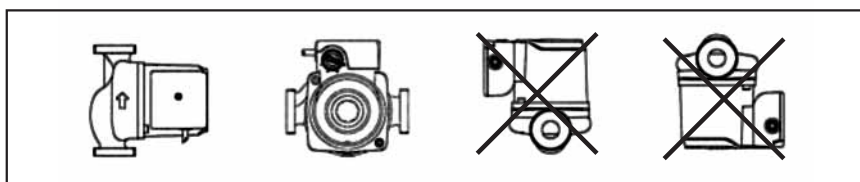
- Civil and industrial pressurized or open tank heating systems

Motor

- Wet runner with internal separator sleeve
- Asynchronous single phase with 3 speed operation
- Provided with built in capacitor
- Class H insulation
- Level protection IP 44
- Power supply voltage: single phase 1 x 230 V - 50 Hz
- Direction of rotation: anticlockwise (motor end view)

Usage limitations

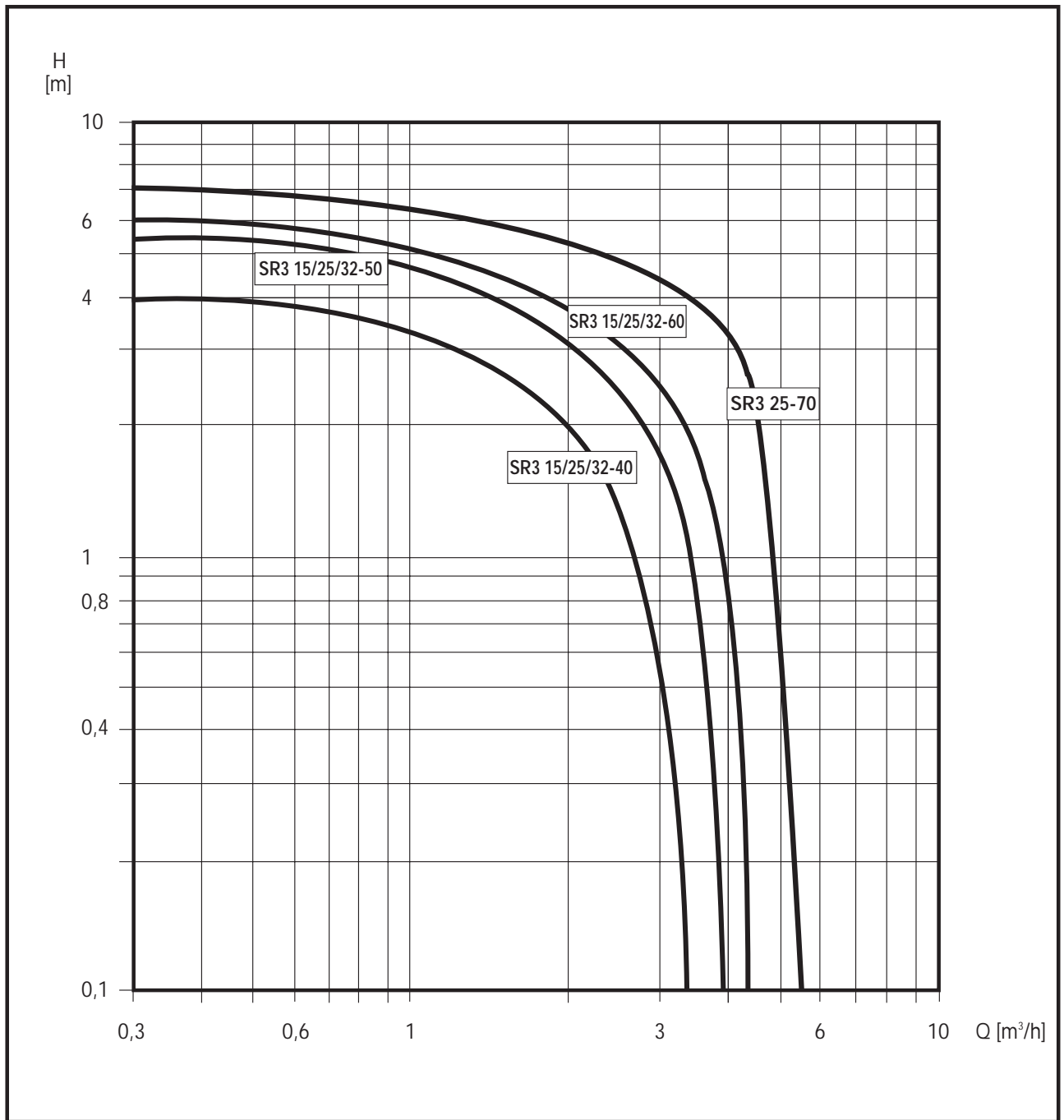
- Non-aggressive and non-explosive clean liquids free of suspended solid particles and fibres
- Permissible fluids (SR3 25/70): water and water/glycol mixtures in a ratio up to 1:1. Glycol mixtures require a reassessment of pump hydraulic data in line with the increased viscosity and depending on mixing ratios.
- Liquid temperature: from +10° C to +110° C
- from -10° C to +110° C (SR3 25/70)
- Maximum operating pressure: 10 bar
- Pressure necessary at the suction point to avoid cavitation: 14 m (at a water temperature of 110° C)
- The pump must be installed with the driving shaft in horizontal position (see drawing below)
- Threaded ports



DESIGN FEATURES

Component	Material
Pump body	EN-GJL-200 (ex G20) cast iron
Impeller	Technopolymer
Motor sleeve and guide ring	X CrNiMo 17-12-2 (AISI 316) stainless steel
Shaft	X 30 Cr 13 mild steel with hard chrome plating
Stator casing	Aluminium
Thrust bearing	Graphite/Ceramic
Pump bearing	Steel with nickel plating

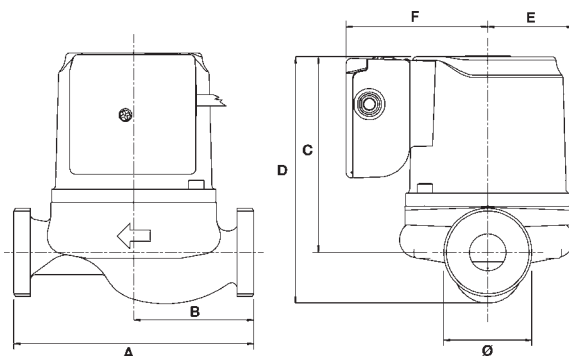
Performance range



PUMP PERFORMANCE

CODE	MODEL	VOLT.	Ø Connections	Centre distance (mm)	µF.	SPEED	Motor power W	Amp.	N (min ⁻¹)	Q	L/1'	10	20	30	40	50	60	70
											m ³ /h	0,6	1,2	1,8	2,4	3,0	3,6	4,2
MY0708KKK	SR3 15/40 1" - 130	1 x 230	1"	130	2,0	3	71	0,30	1950		3,7 3,1 1,9	3,0 2,2 1,0	2,2 1,2	1,4 0,2	0,5			
MY0700KKK	SR3 25/40 1" 1/2 - 130	1 x 230	1" 1/2	130		2	55	0,24	1550									
MY0701KKK	SR3 25/40 1" 1/2 - 180	1 x 230	1" 1/2	180		1	40	0,18	1150									
MY0715KKK	SR3 32/40 2" - 180	1 x 230	2"	180	2,5	3	104	0,45	1850		5,4 4,0 2,4	4,5 3,0 1,2	3,5 1,8 0,2	2,6 1,0	1,6	0,8		
MY0707KKK	SR3 15/50 1" - 130	1 x 230	1"	130		2	78	0,35	1400									
MY0705KKK	SR3 25/50 1" 1/2 - 130	1 x 230	1" 1/2	130		1	56	0,26	950									
MY0706KKK	SR3 25/50 1" 1/2 - 180	1 x 230	1" 1/2	180														
MY0714KKK	SR3 32/50 2" - 180	1 x 230	2"	180	2,8	3	110	0,48	1800		5,5 4,5 2,8	4,9 3,5 1,6	3,8 2,2 0,5	3,2 1,3	2,4 0,4	1,5	0,5	
MY0709KKK	SR3 15/60 1" - 130	1 x 230	1"	130		2	83	0,37	1400									
MY0710KKK	SR3 25/60 1" 1/2 - 130	1 x 230	1" 1/2	130		1	60	0,27	1050									
MY0711KKK	SR3 25/60 1" 1/2 - 180	1 x 230	1" 1/2	180														
MY0713KKK	SR3 32/60 2" - 180	1 x 230	2"	180	3,5	3	150	0,67	2230		6,57 6,16 4,61	6,15 5,52 3,36	5,63 4,69 2,09	5,06 3,77 1,16	4,44 2,8	3,73	2,82	
MY0717KKK	SR3 25/70 1" 1/2 - 180	1 x 230	1" 1/2	180		2	132	0,62	1800									
						1	101	0,5	1290									

Pipe fittings not included



DIMENSIONS AND WEIGHTS

Model	Ø Connect	Dimensions mm.						Packing volume (dm ³)	Weight (Kg)	
		A	B	C	D	E	F		net	gross
SR3 15/40 1" - 130	1"	130	65	105,4	135	46,6	76,7	2,75	2,7	2,8
SR3 25/40 1" 1/2 - 130	1" 1/2	130	65	105,4	135	46,6	76,7	2,75		
SR3 25/40 1" 1/2 - 180	1" 1/2	180	90	105,4	135	46,6	76,7	3,55		
SR3 32/40 2" - 180	2"	180	90	105,4	135	46,6	76,7	3,55	2,7	2,8
SR3 15/50 1" - 130	1"	130	65	105,4	135	46,6	76,7	2,75		
SR3 25/50 1" 1/2 - 130	1" 1/2	130	65	105,4	135	46,6	76,7	2,75		
SR3 25/50 1" 1/2 - 180	1" 1/2	180	90	105,4	135	46,6	76,7	3,55		
SR3 32/50 2" - 180	2"	180	90	105,4	135	46,6	76,7	3,55	2,8	2,9
SR3 15/60 1" - 130	1"	130	65	105,4	135	46,6	76,7	2,75		
SR3 25/60 1" 1/2 - 130	1" 1/2	130	65	105,4	135	46,6	76,7	2,75		
SR3 25/60 1" 1/2 - 180	1" 1/2	180	90	105,4	135	46,6	76,7	3,55		
SR3 32/60 2" - 180	2"	180	90	105,4	135	46,6	76,7	2,75	3,4	3,5
SR3 25/70 1" 1/2 - 180	1" 1/2	180	90	121,6	145,5	49	76,7	3,6		

TABLE OF HYDRAULIC PERFORMANCE

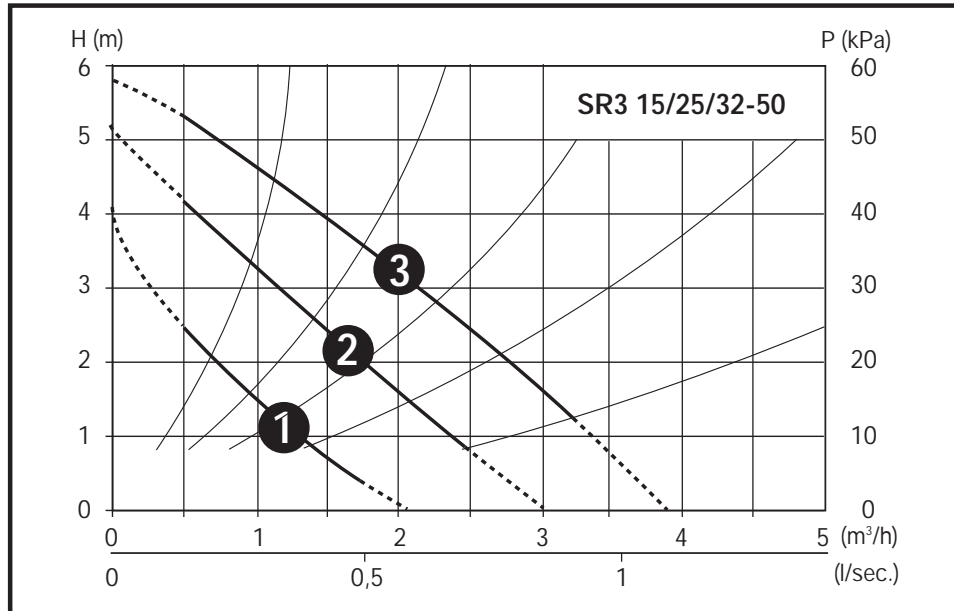
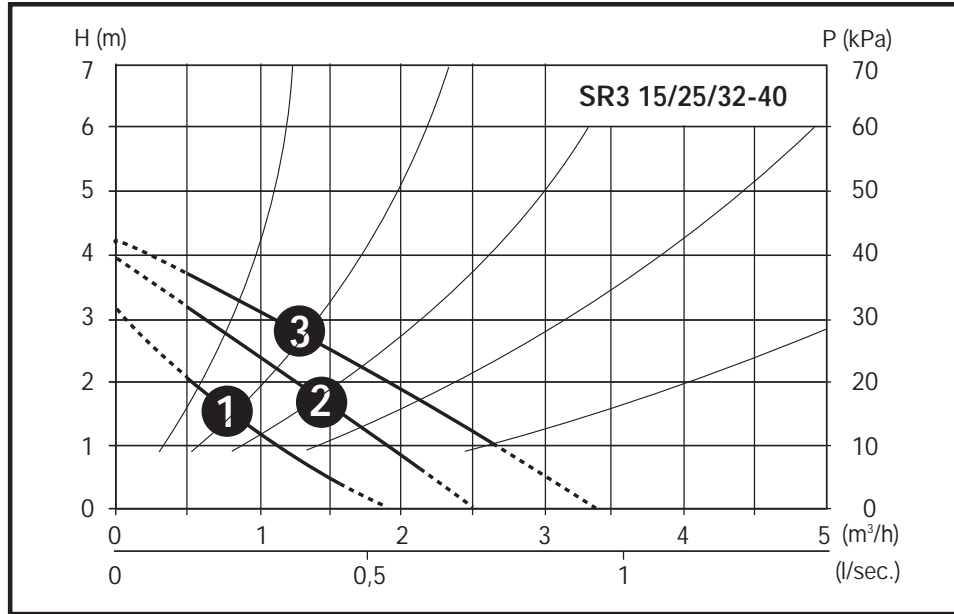
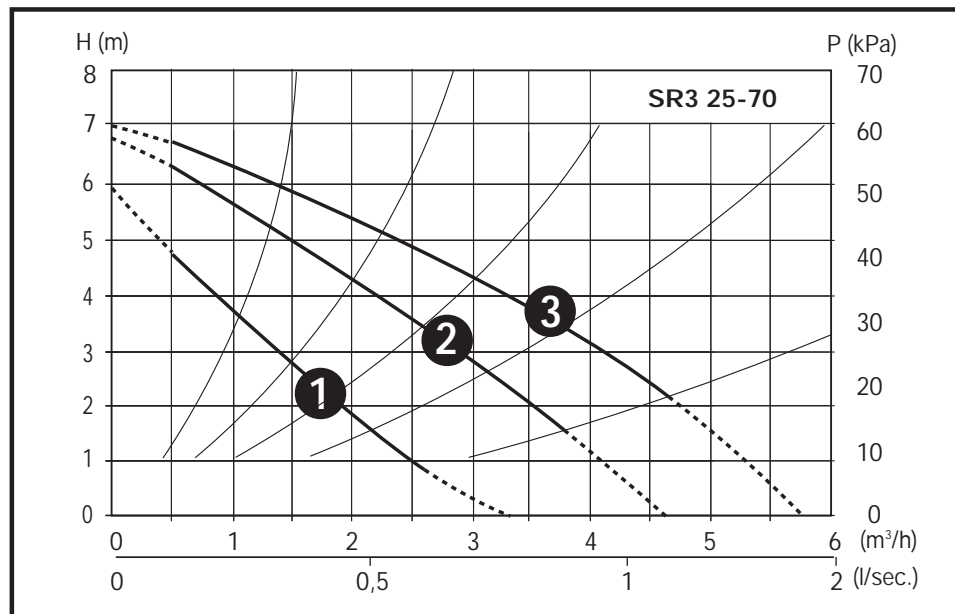
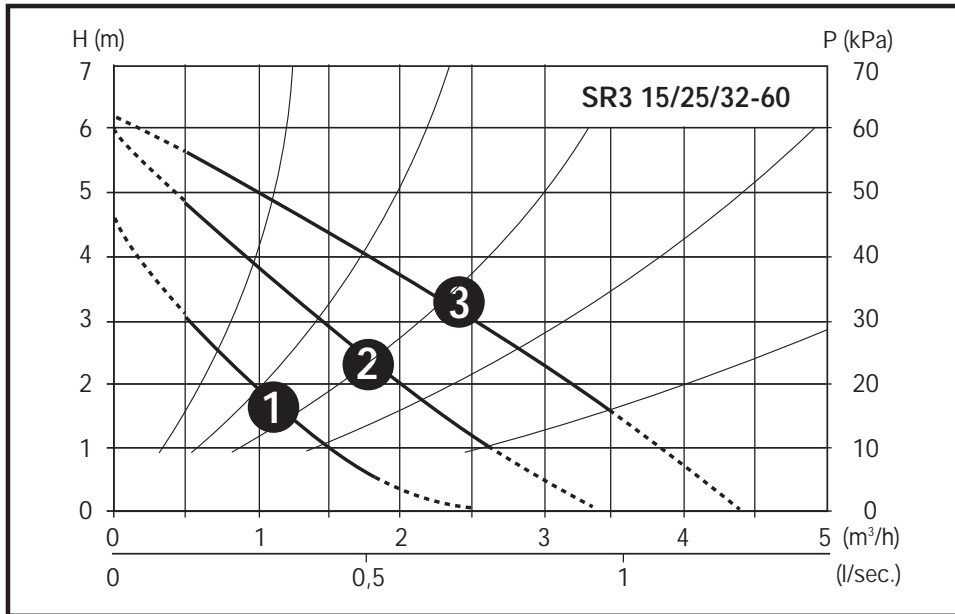


TABLE OF HYDRAULIC PERFORMANCE



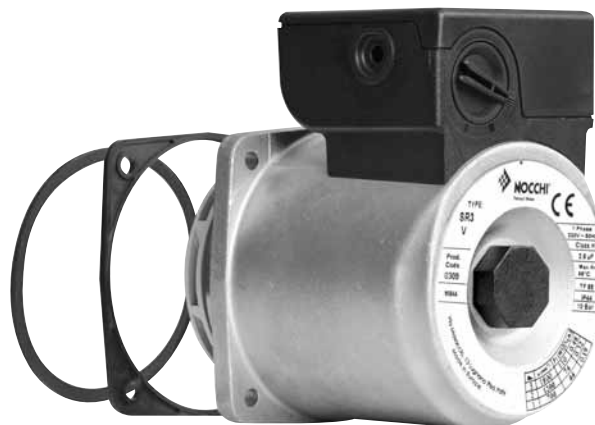
REPLACEMENT PUMP HEAD SR3 - RM4

SR3 MULTIHEAD

Multihead is the motor head equipped with impeller for SR3 circulating pumps. Anticlockwise rotating direction.



GASKET
KIT A



GASKET
KIT B

RM4 MOTORHEAD

RM4 Motorhead is the motor head equipped with impeller with clockwise rotating direction.



PUMP PERFORMANCE

CODE	MODEL	VOLTAGE	μF	SPEED	Motor power W	Amp.	n (min ⁻¹)
MY0712KKK	MULTI HEAD SR3 *	1 x 230 V	2,8	3	110	0,48	1800
				2	74	0,32	1200
				1	44	0,19	700
MY0716KKK	RM4 MOTORHEAD •	1 x 230 V	2,5	4	110	0,46	1800
				3	83	0,37	1400
				2	60	0,27	1050
				1	44	0,19	700

* Clockwise rotating direction (motor side)

• Anticlockwise rotating direction (motor side)